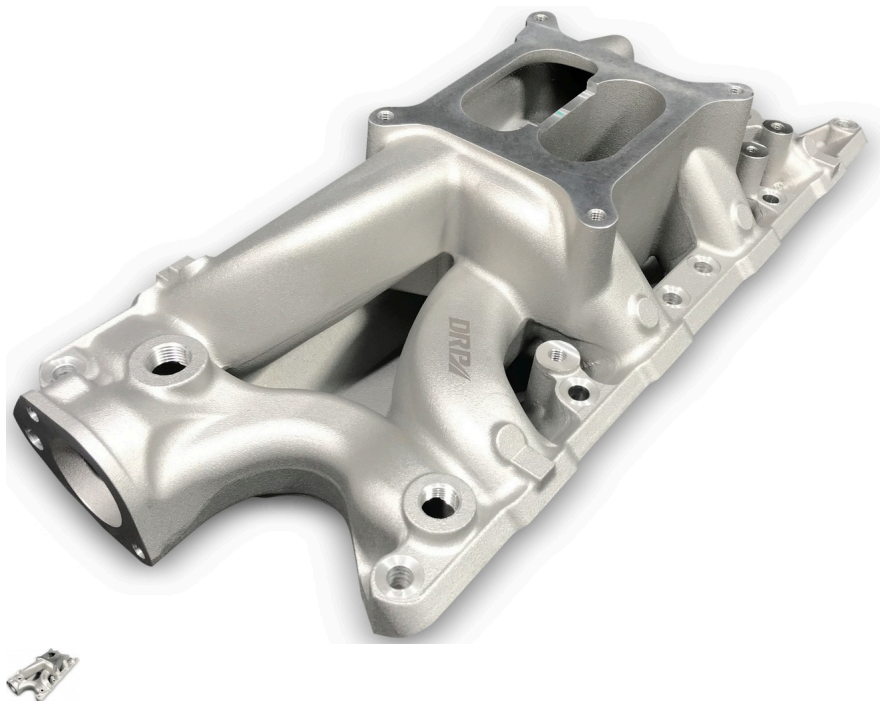


## 302 347 Windsor RPM Air Gap Manifold



Dual Plane Intake manifold Ford 302 347 Windsor, Small Block Ford. Suits Ford SBF Windsor 8.2" Deck height (289/302W) Check out the casting quality on these intake manifolds, they are Mint! We have had multiple feed back that these manifolds not only look excellent, they also perform as good as they look. This is a Premium Dual Plane, High rise, Square Bore style Intake manifold. Has strong midrange torque while maintaining high RPM power. Works with all 4150 Holley/Edelbrock style carburetors. Includes a step down cut between the two planes for improved idle and throttle response. No provisions for exhaust heated choke. Dyno testing with a 1/2" and 1" open spacer has shown an increase in top end power. Improve the performance and aesthetics of your Small Block Ford and fit one of these DRP – Dual Plane Manifolds today! Power Range: 1500-6500! rpm range - See Dyno Run Sheet. Proven Dyno results for a 347/360 cube Stroker combinations. Great for street cars and mild race engines Excellent fuel distribution Port Size: 1.080" High x 1.850" Wide.

Rating: Not Rated Yet

**Price:**

Variant price modifier:

Base price: \$ 393.53

\$ 357.75

Price: \$ 393.53

You save:

[Ask a question about this product](#)